

COMPACT CADET®3 ELONGATED TOILET

2431.010

- Vitreous china
- Low-consumption (6.0 Lpf/1.6 gpf)
- Space saving compact design - Elongated bowl fits in the same space as a round front toilet
- 12" (305mm) Rough-in
- EverClean™ anti-microbial surface which inhibits the growth of stain and odor causing bacteria, mold, and mildew
- Featuring the **Cadet®3 Flushing System**
- Elongated siphon action jetted bowl with 2-1/8" trapway
- Internal trapway area fully glazed
- Generous 8" x 9" water surface area
- Close coupled tank with flat tank cover for superior storage
- Oversized 3" Flush Valve with Chemical Resistant Flapper
- Speed Connect™ tank to bowl coupling system
- Sanitary dam on bowl with four point tank stabilization
- 2 color match bolt caps
- Chrome Trip Lever
- Proven preferred styling
- 100% factory flush tested
- 5 year warranty



3046.016 Elongated Bowl

4019.016 Tank

Nominal Dimensions:

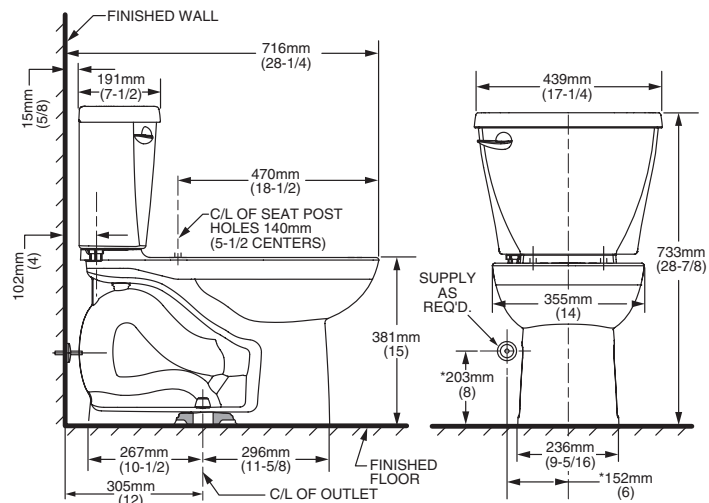
718 x 438 x 733mm
(28-1/4" x 17-1/4" x 28-7/8")

Fixture only, seat and supply by others

Compliance Certifications -

Meets or Exceeds the Following Specifications:

- ASME A112.19.2M for Vitreous China Fixtures - includes Flush Performance, Ball Pass Diameter, Trap Seal Depth and all Dimensions
- Los Angeles Department of Water and Power Supplementary Purchase Specification for Non-Adjustability



NOTES:
THIS COMBINATION IS DESIGNED TO ROUGH-IN AT A MINIMUM DIMENSION OF 305MM (12") FROM FINISHED WALL TO C/L OF OUTLET.
* DIMENSIONS SHOWN FOR LOCATION OF SUPPLY ARE SUGGESTED. SUPPLY NOT INCLUDED WITH FIXTURE AND MUST BE ORDERED SEPARATELY.

IMPORTANT: Dimensions of fixtures are nominal and may vary within the range of tolerance established by ANSI Standard A112.19.2. These measurements are subject to change or cancellation. No responsibility is assumed for use of superseded or voided pages.

To Be Specified:

- Color: White Bone Silver Linen Black
- Seat: #5325.010 Elongated Champion® Slow Close solid plastic seat and cover with easy lift off feature
- Seat: #5284.016 Elongated EverClean™ anti-microbial solid plastic seat and cover
- Seat: #5311.012 Elongated Laurel molded wood seat and cover
- Supply with stop:

CADET®3
Flushing System