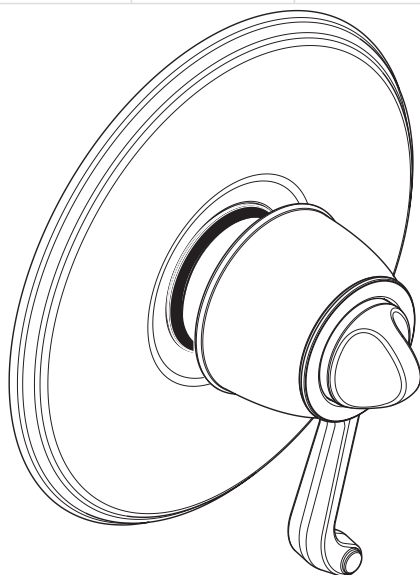


Installation Instructions / Warranty



ThermoBalance I™ Trim

hansgrohe

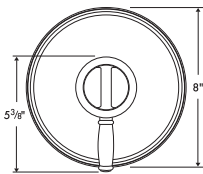
ThermoBalance I Trim Kits

These instructions cover these models:

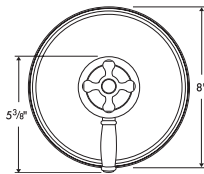
	Valve trim only	Shower set with rough	Shower set trim
Retroaktiv Lever	06061XXX	06070XXX	06079XXX
Retroaktiv Scroll	06062XXX	06071XXX	06080XXX
Retroaktiv Cross	06063XXX	06072XXX	06081XXX
Solaris	06635XXX	06638XXX	06641XXX
Stratos	06579XXX	06582XXX	06585XXX
Metro	06655XXX	06658XXX	06661XXX
Interaktiv S	06878XXX	06881XXX	06884XXX
Metris	31316XX1		31323XX1
Focus S	31735XX1		31771XX1
Talis S	32316XX1		32323XX1

These trim kits are for use with the following rough valves:

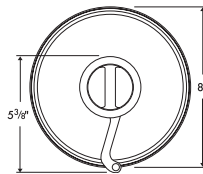
ThermoPlus/ThermoBalance I rough valves 06621000, 06622000
ThermoPlus/ThermoBalance I rough valves with bypass 06300000, 06301000



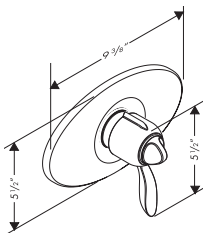
06061XXX



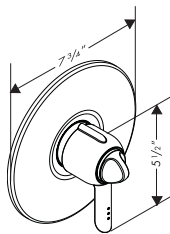
06062XXX



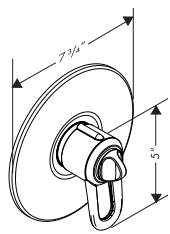
06063XXX



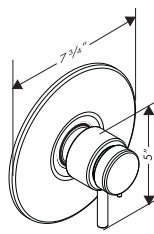
06635XXX



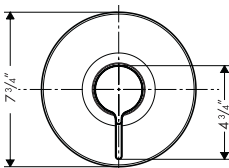
06579XXX



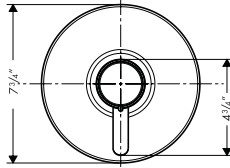
06655XXX



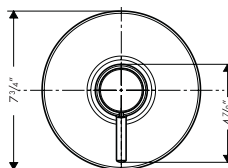
06878XXX



31316XX1



31735XX1



32316XX1

Technical Information

Recommended pressure	45 - 72 psi
Max hot water temperature	165° F*
Recommended incoming hot water temp.	120 - 140° F*
With rough valve 06621000, 06622000	
Nominal capacity @ 45 PSI	9.5 gpm
Nominal capacity @ 60 PSI	11.5 gpm
With rough valve with bypass 06300000, 06301000	
Nominal capacity @ 45 PSI	6.0 gpm
Nominal capacity @ 60 PSI	6.5 gpm
Safety stop	100° F
Maximum output temperature	110° F**
1/2" NPT Connections	

Listed by UL

*Please know and follow all applicable local plumbing codes when setting the temperature on the water heater. In Massachussetts, the water heater may be set no higher than 112°F.

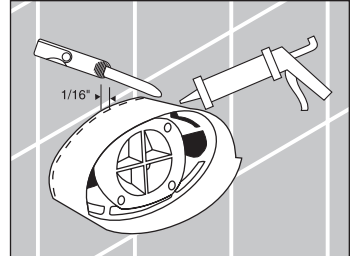
**The high temperature limit stop may be reset to comply with local plumbing codes. See page 8.

Installation

Turn the water off at the main, or at the stops, before beginning.

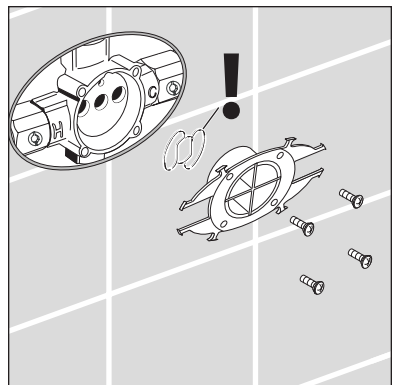
Cut the installation box so that it extends 1/16" outside the finished wall.

Seal the wall around the installation box with waterproof sealant.



Remove the label. Cut the support arms that connect the flushing plug to the installation box. Remove the flushing plug. **Do not discard the screws.**

Be sure that the blue sealing gasket is removed as well.



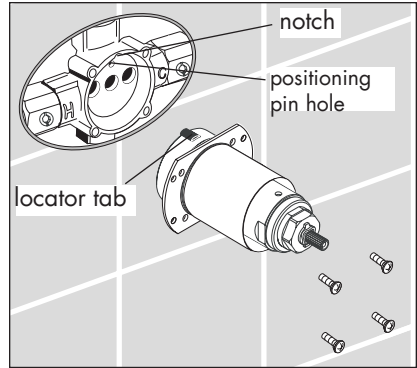
Insert the thermoelement in the rough. The locator tab on the thermoelement goes straight into the notch in the rough*.

The positioning pin on the back of the thermoelement goes straight into the hole in the rough.

Use the flushing plug screws to connect the thermoelement retainer plate to the rough. Tighten the screws evenly, using a manual screwdriver, in a cross-wise pattern. Do not overtighten the screws.

Turn on the water supplies to the valve, and check for leaks. If there is a leak around the thermoelement, turn the supplies off, and remove the thermoelement. Confirm that the sealing gasket from the flushing plug was removed. Install the thermoelement, and tighten the screws.

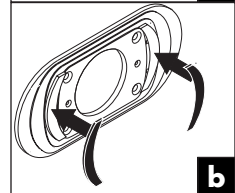
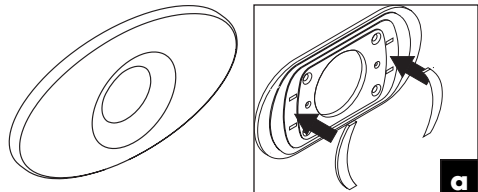
If the unit continues to leak, contact Hansgrohe Customer Service for a replacement thermoelement.



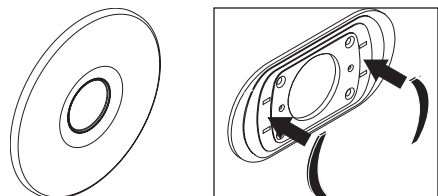
***Note:** Older models of the ThermoBalance I rough do not have the notch for the locator tab. See the next page for instructions on how to modify the ThermoBalance I thermoelement.

Solaris only (oval escutcheon): Snap the white plastic Duotec spacers onto the carrier plate.

Install two of the Duotec strips on the spacers. Install the remaining two strips on the back of the escutcheon (trim plate).



All other models (round escutcheon): Install two Duotec strips directly on the carrier plate. Install the remaining two strips on the back of the escutcheon.



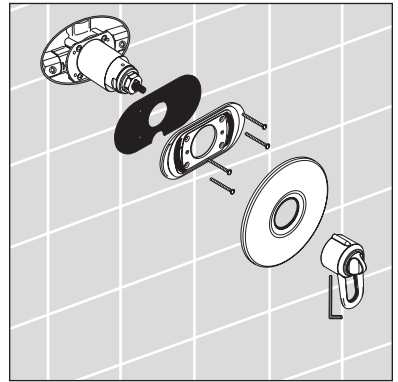
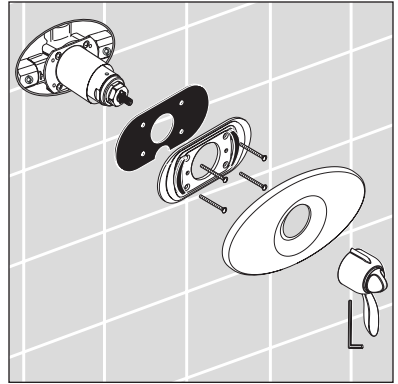
All models: Install the carrier plate gasket and carrier plate with the carrier plate screws.

Press the escutcheon very firmly over the carrier plate, so that the strips of Duotec interlock, producing a very firm hold.

Install the handle. Tighten the handle screw with a 3 mm Allen wrench. The handle screw must engage the slot milled into the brass on the thermoelement.

Set the high temperature limit stop (optional) – see page 8.

Justify the handle – see page 6.

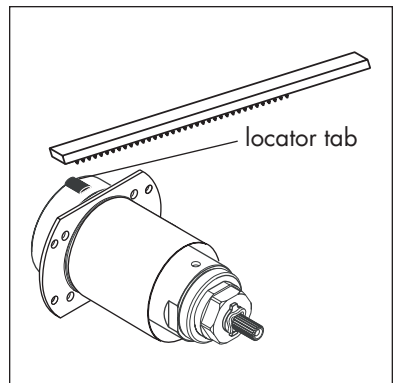


Modify the Thermoelement

The current ThermoBalance I thermoelement has both a locator tab and a positioning pin. (The positioning pin is located on the back of the thermoelement, and is not visible in this picture.)

An older ThermoBalance I/ThermoPlus rough does not have a notch for the locator tab.

Carefully file off the locator tab before installing a current thermoelement into an old rough.



Justify the Handle

Tools required:

Thermometer

3 mm Allen wrench (included with trim kit)

Turn the valve on. Place the thermometer in the water stream.

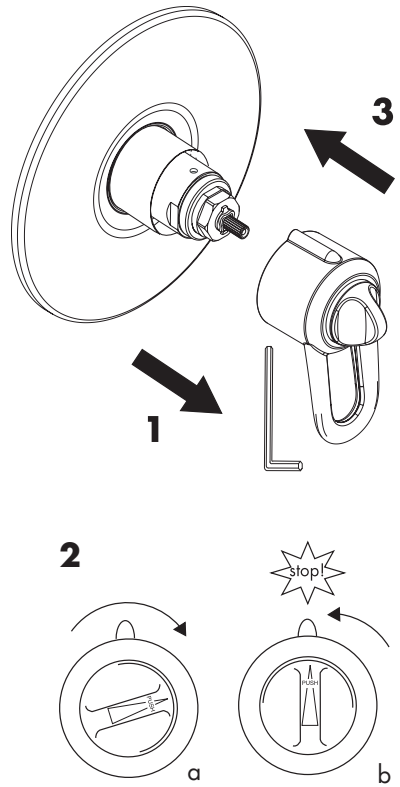
Turn the temperature control knob until the water coming out measures 100° on the thermometer.

Turn the water off using the lever part of the handle.

Use a 3 mm Allen wrench to loosen the set screw on the bottom of the handle. Remove the handle from the valve (1).

Hold the lever in one hand. With the other hand, turn the temperature control knob approximately ½ turn clockwise (2a). Then, **without pressing inward on it**, turn it counter-clockwise until it is positioned vertically and hits the safety stop (2b).

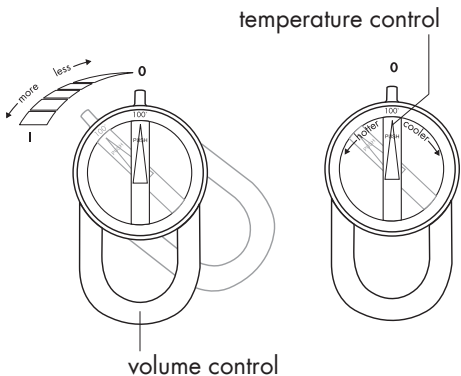
Reinstall the handle and tighten the set screw (3).



User Instructions

The ThermoBalance I has two control features: the temperature control knob and the volume control lever.

Turn the temperature control counter-clockwise to make the water warmer. The temperature control will stop when the water is 100° – this is the safety stop. To override the safety stop, press inward on the temperature control and continuing to turn it counter-clockwise.



Important: the temperature control will not automatically reset to below 100° when the water is turned off.

Turn the temperature control knob clockwise to make the water cooler.

The volume control lever controls the water flow. The center position is off. Turn the handle counter-clockwise to send the water to the outlet port. The further you turn the handle from the off position, the greater the water flow.

Troubleshooting

Problem	Possible Cause	Solution
Water leaks between thermoelement and rough	sealing ring from flushing plug still inside rough	remove sealing ring
	ceramic plate(s) inside thermoelement damaged	replace thermoelement
Handle turns, but water does not turn on/off	handle screw not tightened	tighten handle screw
Water drips for several minutes after the valve is turned off	normal clearing of showerhead	not a problem
Water drips continuously after the valve is turned off	ceramic plate(s) damaged	replace thermoelement
Water does not get hot/cold enough	high temperature limit stop not set properly	reset high temperature limit stop
	handle not justified	justify handle
	thermostat cartridge is faulty	replace thermostat cartridge
Temperature is erratic	thermostat cartridge is faulty	replace thermostat cartridge
Water pressure is poor	filters on thermostat cartridge are clogged	clean the filters
Unit outputs both hot and cold water, but the water does not mix	not a product defect – hot and cold supplies are reversed	correct the plumbing

Set the High Temperature Limit Stop (optional)

IMPORTANT: Many municipalities have codes limiting the maximum discharge temperature of a shower valve to 110° F or less. Please know and follow all applicable local codes when setting the high temperature limit stop.

Tools Required:

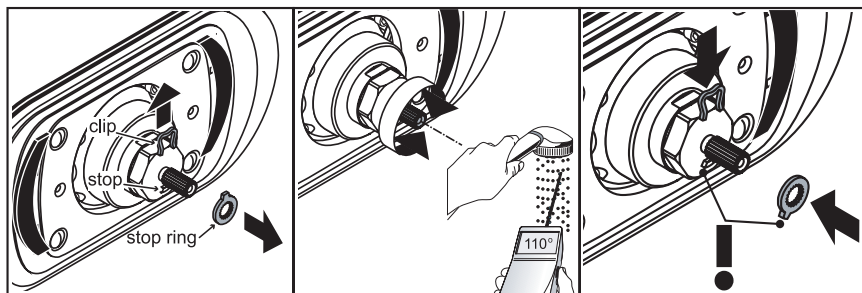
Thermometer

3 mm Allen wrench (included with trim kit)

Turn the hot and cold supplies to the valve on.

Turn the water on using the handle.

Use the 3 mm Allen wrench to loosen the set screw on the bottom of the handle. Remove the handle.



Remove the clip and stop ring from the thermostatic cartridge stem. Put them in a safe place.

Turn the thermostatic mixer stem with your fingers, clockwise to make the water cooler, counter-clockwise to make the water warmer. Turn the stem until the water coming out is the desired maximum high temperature – 110° in most areas.

Reinstall the stop ring so that it is against the stop. Reinstall the clip.

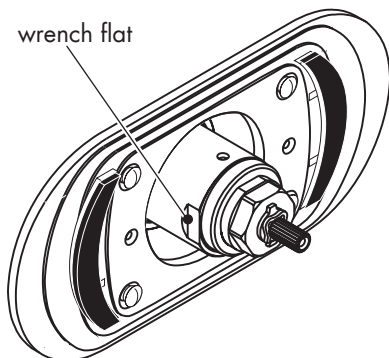
Justify and reinstall the handle.

Maintenance: Cleaning the filter screens

CAUTION: Turn off the water to the shower, either at the main or with the service stops, before opening the valve.

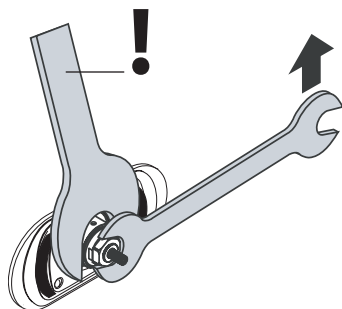
Remove the handle and escutcheon.

Grasp the wrench flats on the thermoelement stop unit with an adjustable wrench.



Hold the stop unit still with one wrench. Use a second adjustable wrench or a 17mm deep socket wrench to unscrew and remove the thermostatic cartridge.

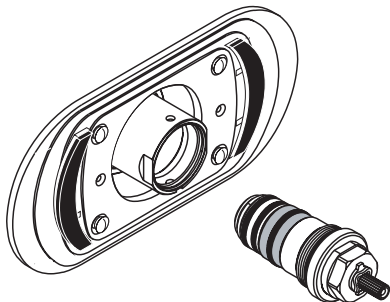
Failure to hold the stop unit steady while unscrewing the thermostat cartridge will result in damage to the stop unit.



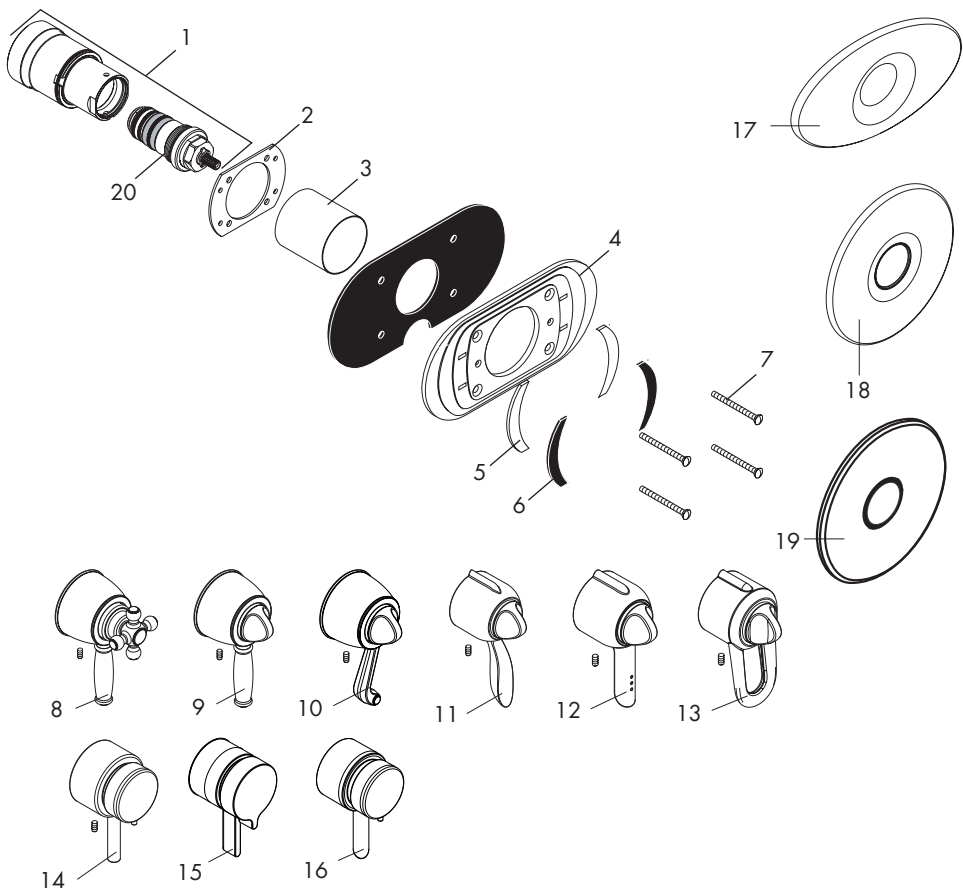
Rinse the debris from the filter screens, using a soft toothbrush if necessary. Do not attempt to remove the screens.

Lubricate the o-rings with white plumbers grease. Reinstall the thermostatic cartridge in the stop unit.

Justify and reinstall the handle.



Replacement Parts



1	thermoelement	88585000
2	retainer plate	88519000
3	sleeve	88520XXX
4	carrier plate	88518000
5	duo-tec spacers	88529000*
6	duo-tec strips	96234000
7	carrier plate screw	88652000
8	cross handle	88608XXX
9	lever handle	88610XXX
10	scroll handle	88609XXX
11	Solaris handle	88530XXX
12	Stratos handle	88547XXX
13	Metro handle	88548XXX
14	Interaktiv S/Talis S	88641XXX
15	Metris handle	
16	Focus S handle	
17	oval escutcheon	88527XXX
18	round escutcheon	88538XXX

19	Retroaktiv escutcheon	88611XXX
20	thermostat cartridge	94282000

XXX = color code
 000 = chrome
 620 = oil rub bronze
 820 = brushed nickel
 830 = polished nickel
 930 = polished brass

*included with Solaris only

Cleaning Recommendation for Hansgrohe Products

Modern lavatory faucets, kitchen faucets, and showers consist of very different materials to comply with the needs of the market with regard to design and functionality. To avoid damage and returns, it is necessary to consider certain criteria when cleaning.

Cleaning Materials for Faucets and Showers

Acids are a necessary ingredient of cleaning materials for removing lime, however please pay attention to the following points when cleaning faucets and showers:

- Only use cleaning materials which are explicitly intended for this type of application.
- Never use cleaning materials which contain hydrochloric, formic, phosphoric, or acetic acid, as they cause considerable damage.
- Never mix one cleaning material with another.
- Never use cleaning materials or appliances with an abrasive effect, such as unsuitable cleaning powders, sponge pads, or micro fiber cloths.

Cleaning Instructions for Faucets and Showers

Please follow the cleaning material manufacturer's instructions. In addition, pay attention to the following points:

- Clean the faucets and showers as and when required
- Use the amount of cleaning product and the amount of time recommended by the manufacturer. Do not leave the cleaner on the fixture longer than necessary.
- Regular cleaning can prevent calcification.
- When using spray cleaners, spray first onto a soft cloth or sponge. Never spray directly onto the faucet as droplets can enter openings and gaps and cause damage.
- After cleaning, rinse thoroughly with clean water to remove any cleaner residue.

Important

Residues of liquid soaps, shampoos, and shower foams can also cause damage, so rinse with clean water after using.

Please note: if the surface is already damaged, the effect of cleaning materials will cause further damage.

**Components with damaged surfaces must be replaced or injury could result.
Damage caused by improper treatment is not covered under the warranty.**

Limited Lifetime Consumer Warranty

This product has been manufactured and tested to the highest quality standards by Hansgrohe, Inc. ("Hansgrohe"). This warranty is limited to Hansgrohe products which are purchased by a consumer in the United States after March 1, 1996, and installed in either the United States or Canada.

WHO IS COVERED BY THE WARRANTY

This warranty extends to the original consumer purchaser only. This warranty is non-transferable.

WHAT IS COVERED BY THE WARRANTY

This warranty covers only your Hansgrohe manufactured product. Hansgrohe warrants this product against defects in material or workmanship as follows: Hansgrohe will repair at no charge for parts only or, at its option, replace any product or part of the product that proves defective because of improper workmanship and/or material, under normal installation, use, service and maintenance. If Hansgrohe is unable to provide a replacement and repair is not practical or cannot be timely made, Hansgrohe may elect to refund the purchase price in exchange for the return of the product.

LENGTH OF WARRANTY

Replacement or repaired parts of products will be covered for the term of this warranty as stated in the following two sentences. If you are a consumer who purchased the product for use primarily for personal, family, or household purposes, this warranty extends for as long as you own the product and the home in which the product is originally installed. If you purchased the product for use primarily for any other purpose, including, without limitation, a commercial purpose, this warranty extends only (i) for 1 year, with respect to Hansgrohe and Commercial products, and (ii) for 5 years, with respect to AXOR products.

THIS WARRANTY DOES NOT COVER, AND HANSGROHE WILL NOT PAY FOR:

- A. Conditions, malfunctions or damage not resulting from defects in material or workmanship.
- B. Conditions, malfunctions or damage resulting from (1) normal wear and tear, improper installation, improper maintenance, misuse, abuse, negligence, accident or alteration, or (2) the use of abrasive or caustic cleaning agents or “no-rinse” cleaning products, or the use of the product in any manner contrary to the product instructions. (3) Conditions in the home such as excessive water pressure or corrosion.
- C. Labor or other expenses for the disconnection, deinstallation, or return of the product for warranty service, or for installation or reinstallation of the product (including but not limited to proper packaging and shipping costs), or for installation or reinstallation of the product.
- D. Accessories, connected materials and products, or related products not manufactured by Hansgrohe.

TO OBTAIN WARRANTY PARTS OR INFORMATION

Contact your Hansgrohe retailer, or contact Technical Service at:

Hansgrohe Inc.
1492 Bluegrass Lakes Parkway
Alpharetta GA 30004
Toll-free (800) 334-0455.

In requesting warranty service, you will need to provide

- 1. The sales receipt or other evidence of the date and place of purchase.
- 2. A description of the problem.
- 3. Delivery of the product or the defective part, postage prepaid and carefully packed and insured, to Hansgrohe Inc. 1492 Bluegrass Lakes Parkway, Alpharetta, Georgia 30004, Attention: Technical Service, if required by Hansgrohe.

When warranty service is completed, any repaired or replacement product or part will be returned to you postage prepaid.

EXCLUSIONS AND LIMITATIONS

REPAIR OR REPLACEMENT (OR, IN LIMITED CIRCUMSTANCES, REFUND OF THE PURCHASE PRICE) AS PROVIDED UNDER THIS WARRANTY IS THE EXCLUSIVE REMEDY OF THE PURCHASER. HANSGROHE NEITHER ASSUMES NOR AUTHORIZES ANY PERSON TO CREATE FOR IT ANY OBLIGATION OR LIABILITY IN CONNECTION WITH THIS PRODUCT.

HANSGROHE SHALL NOT BE LIABLE TO PURCHASER OR ANY PERSON FOR ANY INCIDENTAL, SPECIAL, OR CONSEQUENTIAL DAMAGES, ARISING OUT OF BREACH OF THIS WARRANTY OR ANY IMPLIED WARRANTY (INCLUDING MERCHANTABILITY).

Some States do not allow the exclusion or limitation of incidental or consequential damages, so the above limitation or exclusion may not apply to you. This warranty gives you specific legal rights, and you may have other rights which vary from State to State. You may be required by law to give us a reasonable opportunity to correct or cure any failure to comply before you can bring any action in court against us under the Magnuson-Moss Warranty Act.

PRODUCT INSTRUCTIONS AND QUESTIONS

Upon purchase or prior to installation, please carefully inspect your Hansgrohe product for any damage or visible defect. Prior to installing, always carefully study the enclosed instructions on the proper installation and the care and maintenance of the product. If you have questions at any time about the use, installation, or performance of your Hansgrohe product, or this warranty, please call or write to us or call us toll-free at 800 334 0455.



Hansgrohe, Inc. • 1490 Bluegrass Lakes Parkway • Alpharetta, GA 30004
Tel. 770 360-9880 • Fax 770 360 9887

www.hansgrohe-USA.com